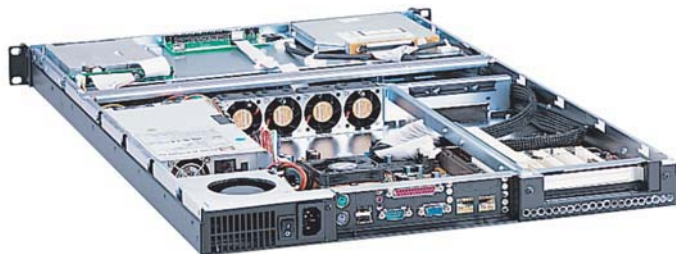
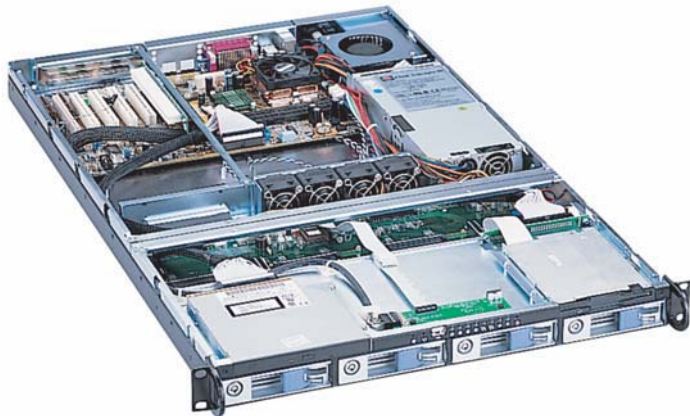


CHASSIS PLANS

F3CHASSIS



Advantages

- Compact 1U x 27.6-inch (700mm) design
- Front door is fastened via thumb screws
- 150W- 460W ATX power supply (1U form factor)
- One 5.25-inch slim CD and one 3.5-inch slim FDD and four Ultra 160 hot-swap SCSI drives
- Removable rack ears for benchtop applications
- Four 15.3CFM center mount fans and one 25.4CFM rear blower is included.

Support

- Superior pre-sales and post-sales technical support
- All products carry a one year limited warranty

Customization

- Custom paint and logo services available



F3 CHASSIS

The F3 Series chassis is a high performance design in a low cost 1U rackmount enclosure. Feature rich, the F3 Series is a solid, robust design which will meet the most rigorous and demanding requirements. This chassis is ideal for high density server applications including collocation.

The enclosure is constructed of 18 gauge steel, clear zinc plated for corrosion protection and an attractive appearance. The front panel is attractively detailed and is of heavier gauge than the chassis.

There is more than ample drive storage. The F3 provides for one slim CD-ROM and one slim floppy drive. In addition, four hot swap SCSI SCA-2 drives are provided. This drive combination is ideal for mission critical applications requiring high performance SCSI hot swap raid.

With this drive combination, the F3 is ideally suited for use as a Web Server, Firewall Server, Proxy Server, VPN Gateway, DNS Server, ISP, Email Server, High-End Workstation

A door covers and protects the drives. Accessible behind the door is the power and reset switches as well as the power-on, drive activity and system alarm status LED's. The LED's are visible through the door when it is closed.

Cooling is provided by four fans with an additional exhaust blower. A thermal management board is provided to monitor fan and blower operation and chassis temperature.

SPECIFICATION

Dimensions

19" (wide) x 1U (1.7") (high) x 25.6 (deep)

Weight - 43 lbs / 19.5 kgs

Drive Capacity

One slim CD ROM drive - front accessible

One slim floppy drive - front accessible

Four hot-swap SCSI SCA-2 drives - front accessible

Supports Ultra 160 (Fast 80 LVD), Ultra2-Wide (Fast 40 LVD) and Ultra Wide(Fast 20 SE) SCSI Auto-Select LVD/SE Mode, Max. Transfer Rate 160 MB/Sec, Active Terminator on Board With Auto-Selection for Ultra 160/Ultra 2 Wide (LVD)/UW(SE)

Front Panel Controls

Power switch

System Reset switch

Alarm Reset switch

Power LED

Drive Activity LED

LAN LED

Fan Failure LED

Switch and LED connectors are labeled at the connector end.

Rear Panel Details

1 Plug-in card slot

ATX I/O Shield

Cooling

Four 40mm 15.3CFM fans

One 25.4CFM exhaust blower

Negative chassis pressure



The Original Industrial Computer Source™

SPECIFICATION CONT.

Power Supply

Not included. Accepts internal 1U supply.

Optional 12, 24 or 48VDC supplies available

Motherboard Mounting

Standard 12 x 13 inch EATX motherboard

Motherboard adapter plate accommodates any motherboard

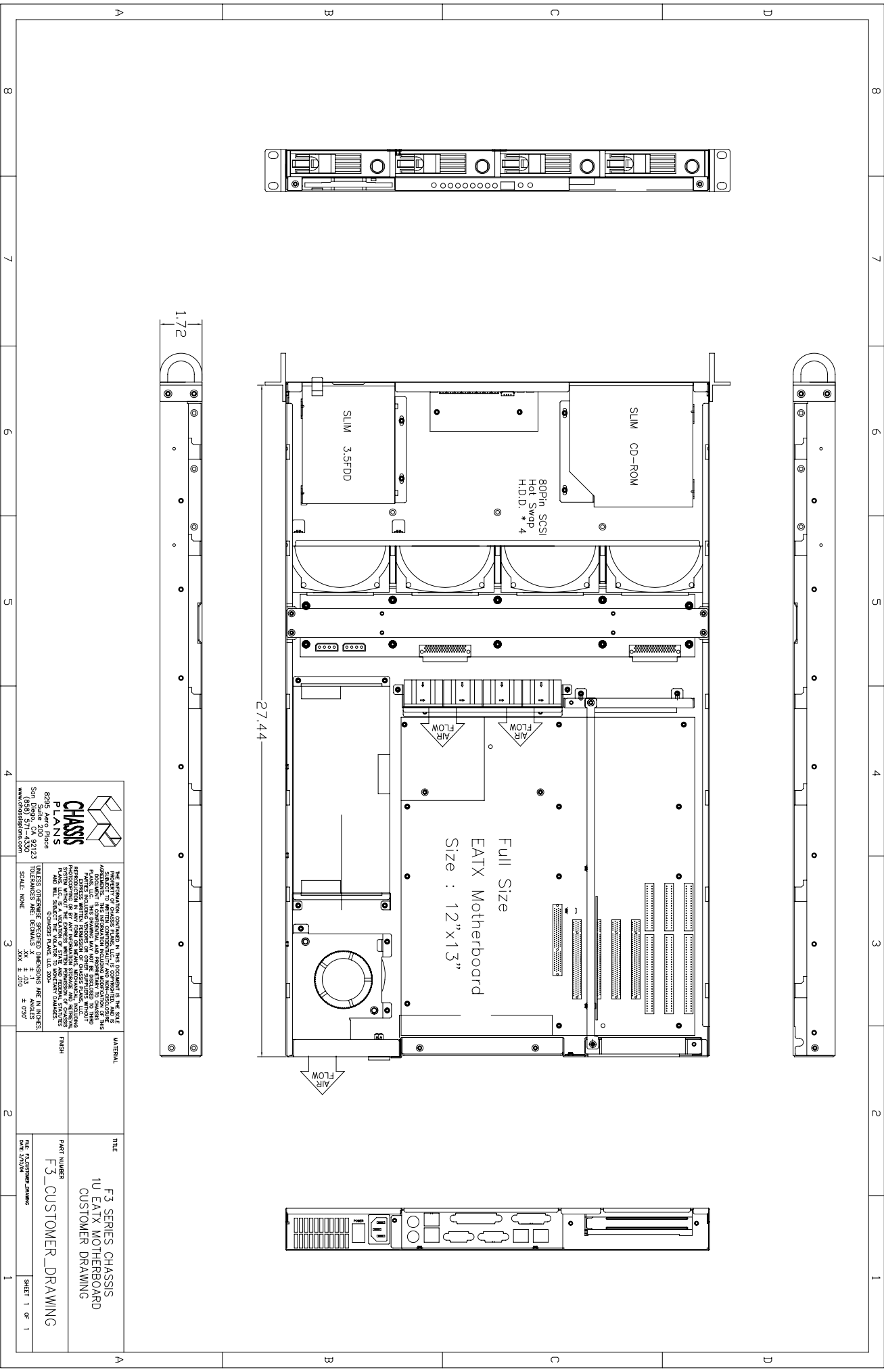
Plug-in I/O Cards

Accommodates one full length plug-in I/O card

Includes 32-bit standard 5V PCI riser card



The Original Industrial Computer Source™



<p>CHASSIS PLANS 8295 Aero Place San Jose, CA 95128 (950) 571-4330 www.chassisplans.com</p>		<p>THE INFORMATION CONTAINED IN THIS DOCUMENT IS THE SOLE PROPERTY OF CHASSIS PLANS, LLC. IT IS CONFIDENTIAL, AND IS NOT TO BE DISCLOSED TO ANY OTHER PARTY WITHOUT THE WRITTEN PERMISSION OF CHASSIS PLANS, LLC. THIS DRAWING IS NOT BE ASSIGNED TO THIRD PARTIES WITHOUT THE WRITTEN PERMISSION OF CHASSIS PLANS, LLC. PHOTOGRAPHING OR REPRODUCTION OF THIS DRAWING FOR ANY PURPOSES IS STRICTLY PROHIBITED. CHASSIS PLANS, LLC IS A DIVISION OF STATE AND FEDERAL SERVICES CORPORATION. © 2004 CHASSIS PLANS, LLC 2004</p>	
<p>UNLESS OTHERWISE SPECIFIED DIMENSIONS ARE IN INCHES. DIMENSIONS ARE SHOWN IN DECIMALS. XX.X ± .010 SCALE: NONE</p>		<p>MATERIAL</p>	
<p>TITLE</p> <p>F3 SERIES CHASSIS 1U EATX MOTHERBOARD CUSTOMER DRAWING</p>		<p>FINISH</p>	
<p>PART NUMBER</p> <p>F3_CUSTOMER_DRAWING</p>		<p>DATE PLANNING DRAWING</p>	
<p>SHEET 1 OF 1</p>			