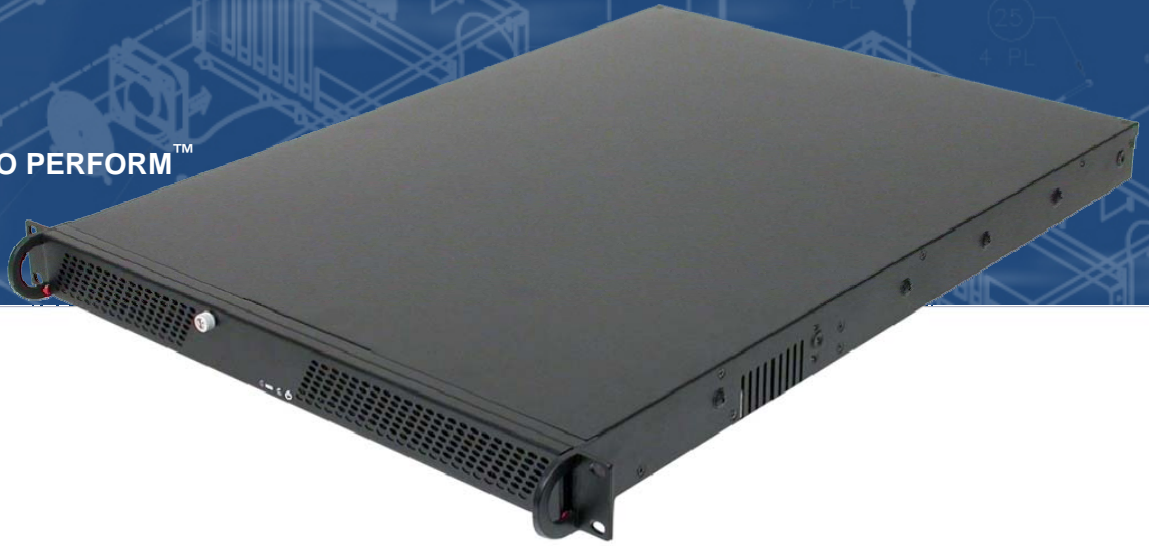


F1CHASSIS

ROBUST 1U

RUGGED ENTERPRISE CLASS

SYSTEMS ENGINEERED TO PERFORM™



The F1 Series chassis is a high performance design in a low cost 1U rackmount enclosure. Feature rich, the F1 Series is a solid, robust design which will meet the most rigorous and demanding requirements. This chassis is ideal for high density server applications including collocation.



FEATURES

- Compact 1U x 23.8-inch design
- Front door provides drive security
- One 5.25-inch and one 3.5-inch external drive mounts and two 3.5-inch internal mounts.
- Removable rack ears for bench top applications
- Three 40x20mm 7CFM cooling fans and two 40x28mm 13.6CFM exhaust
- Accepts EATX 12x13" motherboard

SUPPORT

- Superior pre- and post-sales technical support
- All products carry a two year limited warranty

CUSTOMIZATION

- Custom paint and logo available
- Custom chassis features to fit customer requirements
- Several fan options



The Original Industrial Computer Source®

Chassis Plans · 8295 Aero Place · San Diego · CA · 92123
Phone (858) 571-4330 · Fax (858) 571-6146

F1 CHASSIS

The enclosure is constructed of 18 gauge steel, clear zinc plated for corrosion protection and an attractive appearance. The front panel is attractively detailed and is of heavier gauge than the chassis.

There is more than ample drive storage. Provided is one external 5-1/4 inch drive, one external 3-1/2 inch drive and two internal 3-1/2 inch drives.

A door covers and protects the drives. Accessible behind the door are the power and reset switches as well as the power-on and drive activity LED's. The LED's are visible through the door when it is closed. Cooling is provided by five fans, three center mount which provide cooling air and two rear mount which exhaust the air.

The F1 Chassis provides for mounting a standard EATX motherboard up to 12 x 13 inches. One plug-in card can be installed using the included riser card.

Chassis Plans offers turn-key configured systems exactly built to customer specification and requirements.

Dimensions (W x H x D)

17 x 1.7 x 23.8-inch

Front Door

Screw secured perforated front door

Front Panel Indicators

Power LED

Disk activity LED

Front Panel Controls/Connections

System reset switch

Power on/off

Drive Capacity

One 5.25-inch front drive bay

One 3.5-inch front drive bay

Two 3.5-inch internal drive bays

Cooling Fans

Three 40x28mm 7CFM intake fans

Two 40x28mm 13.6CFM exhaust fans

Motherboard Mount

EATX (12x13")

Construction

18 gauge cold rolled steel

Clear zinc plated

Color

Black

Medium texture

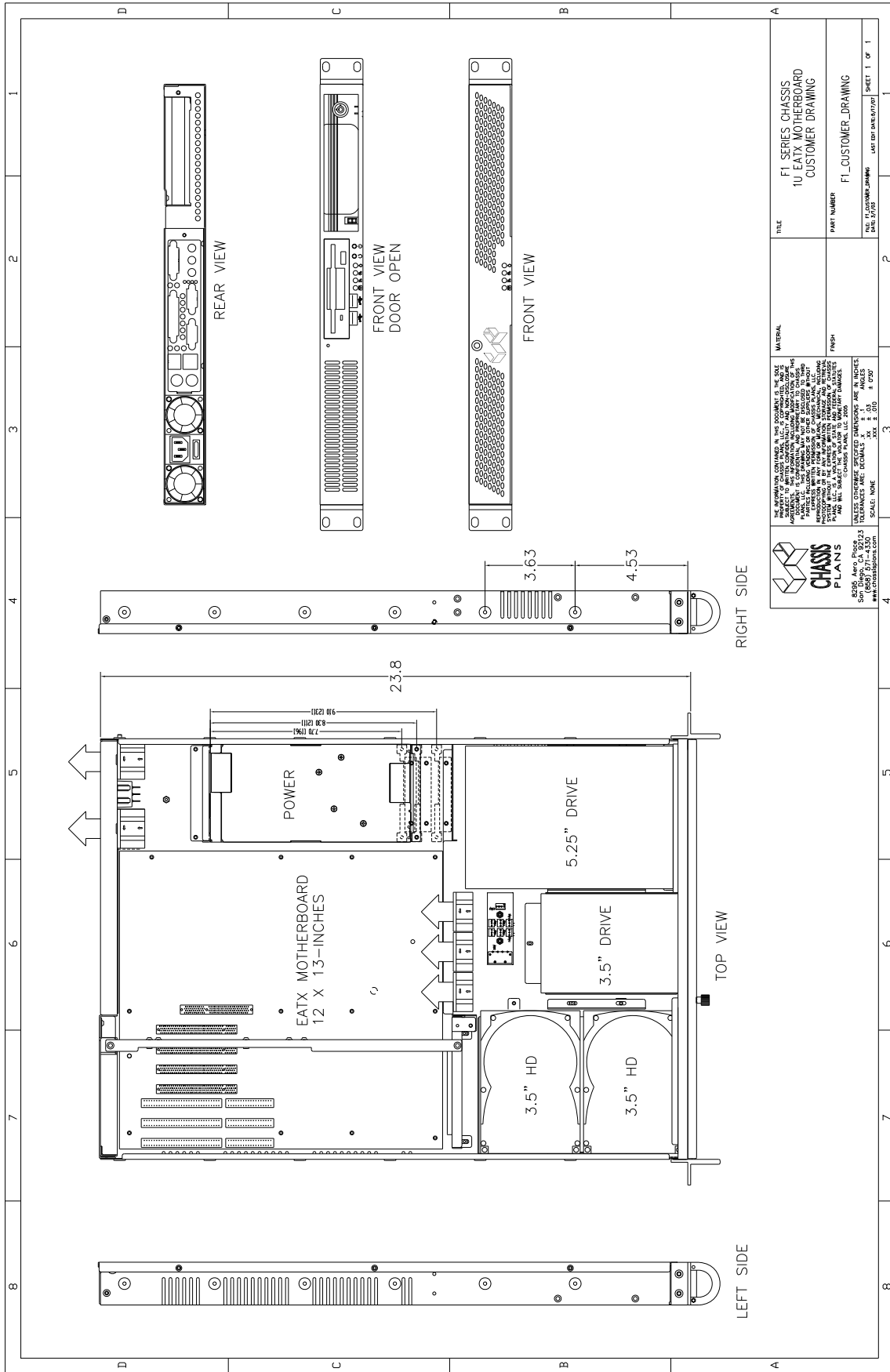
Weight

30 lbs. (13.6kg) representative system

Environment

Operating and storage temperature, shock and humidity is dependant on installed components





<p>THE INFORMATION CONTAINED IN THIS DOCUMENT IS THE SOLE PROPERTY OF CHASSIS PLANS. IT IS TO BE USED ONLY FOR THE PROJECT AND SYSTEM SPECIFICALLY IDENTIFIED HEREIN. CHASSIS PLANS SHALL NOT BE HELD RESPONSIBLE FOR ANY DAMAGE TO PERSONS OR PROPERTY ARISING FROM THE USE OF THIS INFORMATION. CHASSIS PLANS SHALL NOT BE HELD RESPONSIBLE FOR ANY DAMAGE TO PERSONS OR PROPERTY ARISING FROM THE USE OF THIS INFORMATION. CHASSIS PLANS SHALL NOT BE HELD RESPONSIBLE FOR ANY DAMAGE TO PERSONS OR PROPERTY ARISING FROM THE USE OF THIS INFORMATION.</p>		TITLE	F1 SERIES CHASSIS 1U EATX MOTHERBOARD CUSTOMER DRAWING
<p>CHASSIS PLANS 8208 Aero Place San Diego, CA 92123 www.chassisplans.com</p>		MATERIAL	
<p>SCALE: NONE</p>		FINISH	
<p>TOLERANCES ARE: DIMENSIONS IN INCHES FRACTIONS DECIMALS X .1 X .25 ANGLES X .1 X .15 X .5 X .5</p>		PART NUMBER	F1_CUSTOMER_DRAWING
<p>DATE: 11/27/2019 2:44:45 PM</p>		<p>DATE: 11/27/2019 2:44:45 PM</p>	
<p>SHEET 1 OF 1</p>		<p>SHEET 1 OF 1</p>	

