

CHASSIS PLANS

D1 CHASSIS



Advantages

- 3U x 20.7 inch depth design
- The D1 Chassis provides for mounting a standard ATX motherboard up to 9.6 x 12 inches
- Chassis can hold five internal drives, two front accessible 5-1/4" drive bays, and one 3-1/2 inch bay
- Cooling is provided by two front mount 90mm 51CFM fans plus one 80mm exhaust fan.

Support

- Superior pre-sales and post-sales technical support
- All products carry a one year limited warranty

Customization

- Custom paint and logo services available
- Custom mounting brackets are available



CHASSIS
PLANS

The Original Industrial Computer Source™

Chassis Plans LLC, 8295 Aero Place, Ste. 200, San Diego CA, 92123
 PH (858) 571-4330 FX (858) 571-6146
 salesteam@chassisplans.com
 ©2005 Chassis Plans LLC

D1 CHASSIS

The D1 Series chassis is a high performance design in a low cost 3U rackmount enclosure. Feature rich, the D1 Series is a solid, robust design which will meet the most rigorous and demanding requirements. This chassis is ideal for high density disk intensive web server, back office server, firewall, proxy server and VPN gateway applications including collocation.

The enclosure is constructed of 18 gauge steel, clear zinc plated for corrosion protection and an attractive appearance. The front panel is attractively detailed and is of heavier gauge than the chassis.

There is a large amount of drive space in 3U with the five internal drives, two front accessible 5-1/4" drive bays, and one 3-1/2 inch bay. Low cost raid plus CD and tape is an evident configuration.

A door covers and protects the drives. Accessible behind the door is the power and reset switches. Visible through the door are the power, drive activity and alarm LED's.

Cooling is provided by two 90mm 51CFM fans blowing through the chassis plus one 80mm exhaust fan. A door mounted air filter provides clean cooling air and easy filter access.

The D1 Chassis provides for mounting a standard ATX motherboard up to 9.6 x 12 inches. Seven plug-in cards up to 10 inches long can be installed.

Power is provided by a front mounted PS/2 style power supply. Several power options including redundant operation and DC operation are available.

SPECIFICATION

Dimensions

19" (wide) x 3U (5.20") (high) x 20.7" (deep)

Drive Capacity

Five internal 3-1/2 inch drives

Two 5-1/4 inch drives - front accessible

One 3-1/2 inch drive - front accessible

Front Panel Controls

Power switch - black momentary pushbutton with 2 position .100 header for board connection

Reset switch - black pushbutton with 2 position .100 header for board connection

Power LED - green with 3 position .100 header for board connection

Drive activity - red with 2 position .100 header for board connection

Switch and LED connectors are labeled at the connector end.

Rear Panel Details

7 Plug-in card slots

ATX I/O Shield

Two DB25 connector knockout

Two SCSI connector knockout

Cooling

Two 90mm 51CFM fans

One 80mm exhaust fan

Positive chassis pressure

Power Supply

Front Mount PS/2 style

Optional redundant and DC operation supplies available

Power supply not included.

Motherboard Mounting

Standard 9.6 x 12 inch ATX motherboard

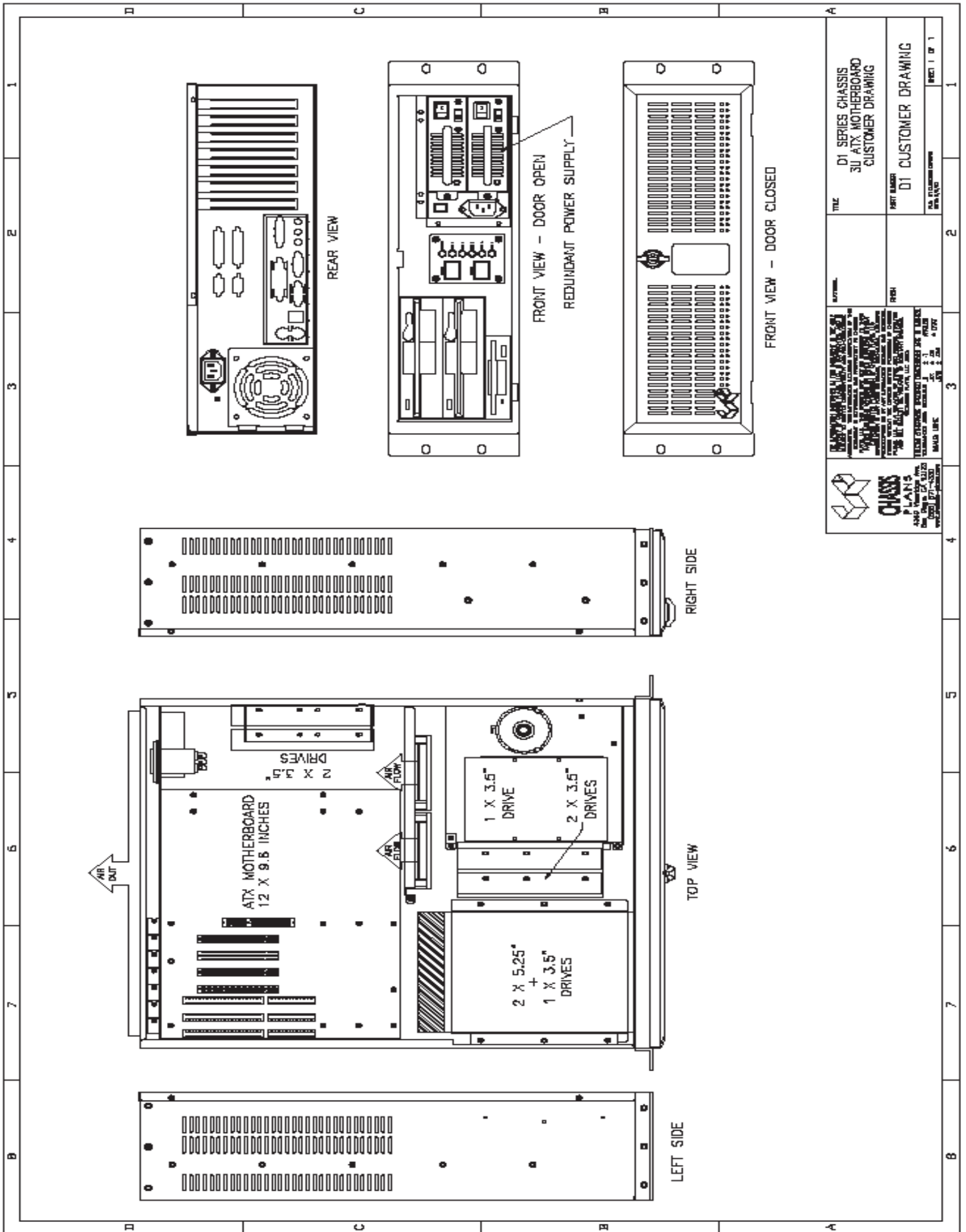
Motherboard adapter plate accommodates any motherboard

Plug-in I/O Cards

Accommodates seven 10 inch long plug-in I/O cards



The Original Industrial Computer Source™



<p>CHASSIS PLANS SAN DIEGO, CA 92123 (619) 571-4330 www.chassisplans.com</p>		<p>REVISIONS</p> <p>DATE: 01/11/07</p> <p>BY: [Signature]</p>	
<p>TITLE: D1 SERIES CHASSIS 3U ATX MOTHERBOARD CUSTOMER DRAWING</p>		<p>PART NUMBER: D1 CUSTOMER DRAWING</p>	
<p>DATE: 01/11/07</p>		<p>SHEET 1 OF 1</p>	