

CHASSIS PLANS



CPPM-8U201

ENCLOSURE

- 20.1" UXGA 1600x1200 TFT LCD
- 8U (13.97") x 3" deep
- Rugged all aluminum construction
- Designed to Satisfy Military, Industrial and Commercial Requirements
- Compact Enclosure for Limited Depth Installation

DISPLAY

- Largest LCD Panel that can fit within the standard rack constraints.
- 20.1" Diagonal Active Matrix UXGA TFT LCD
- Featuring LG Technology
- 1600 x 1200 @ 60Hz Native Resolution

VIDEO CONTROLLER

- Standard aRGB, DVI-D, S-Video and Composite Video Inputs
- OSD (On Screen Display) for Monitor Setup and Control
- Picture-in-Picture
- Audio Input and Output with Built-In Amplifier (Speakers Not Included)

POWER

- +18VDC Operation with Included Universal AC Power Supply
- Low Power Consumption

OPTIONAL FEATURES / OPTIONS

- Touch Screens: Resistive or Capacitive
- Transflective LCD for Daylight Use
- Enhanced Backlighting
- Protective Glare Filters
- Customer Specified Paint Color
- Customer Logo

The CPPM-8U201 is a high performance rack mount 8U 20.1" TFT LCD display with 1600x1200 resolution. The display offers 250nit brightness, 400:1 contrast, and 89 degree viewing angle for exceptional viewability. An anti-glare hard coating minimizes reflections making images that much clearer. The aspect ratio is 4:3 with a Pixel Pitch of only 0.255mm. It will display 16.7 million colors (True Color).

With only 3" of depth, the CPPM-8U201 is perfect for rack, wall, panel, or kiosk installations. It can be used in Industrial, Commercial, Military, or Broadcast applications. Its lightweight but rugged aluminum construction makes it perfect for mobile installations.

The CPPM-8U201 provides multiple signal input options including aRGB, DVI-D, NTSC, Pal S-Video and Composite Video.

As with all Chassis Plans products, a wide variety of custom options are available.



The Original Industrial Computer Source™

Chassis Plans · 8295 Aero Place · San Diego · CA · 92123
 Phone (858) 571-4330 · Fax (858) 571-6146
 saleseng@chassisplans.com
 www.chassisplans.com
 © 2005 Chassis Plans

ENCLOSURE

19" (wide) x 13.97" (high) x 3.0" (deep)
Weight: 13.0lbs (5.9Kgs)
Color: Powder coated black, light texture
(Custom colors and logos available)

DISPLAY

LG.Phillips 20.1" TFT LCD w/ antiglare hard coating
Display area: 408mm x 306mm
Display Colors: 16.7 Million
Response Time (Tr/Tf): 9/7ms
Viewing Angle: 89/89/89/89 deg
Contrast Ratio: 400:1 typical
Brightness: 250cd/m2 typical
Pixel Pitch: 0.255mm x 0.255mm
Power Management: EPA Energy Star, VESA DPMS

DISPLAY RESOLUTION

Max Resolution:
D-Sub: Analog UXGA 1600 x 1200 @ 75Hz
DVI: UXGA 1600 x 1200 @ 60Hz
Recommended Resolution: UXGA 1600 x 1200 @ 60Hz
19 Display Modes VGA to UXGA
Horizontal Frequency: 15-80KHz Automatic
Vertical Frequency: 60-75Hz Automatic

CONNECTORS:

aRGB: 15-pin high density DB15
DVI: DVI-I 23-pin female
Composite: RCA Plug
S-Video In: 4-Pin Mini Din
Audio In: RCA (x2)
Audio Out: 3.5mm Mini Jack
PC Audio In: 3.5mm Mini Jack
DC Power In: 4-Pin
Touch Screen: USB Type A or Serial DB9

ON SCREEN DISPLAY

Contrast, Brightness, Autosetting, Clock / Phase, Horizontal & Vertical Position / Expansion / OSD, Text & Graph Mode Selection, Color Temp, Recall, Audio Function, PIP Source

REGULATIONS

FCC-A, CE
Optional UL, CSA, TUV

POWER CONSUMPTION

Normal: 60W (front LED Green)
DPM Stand-by/Suspend: <5W (front LED Amber)
DPM Off: <3W (front LED Amber)
Power Key Off: <3W (front LED Off)
Power Switch Off: <1W (front LED Off)
Power Input: 100-240VAC, 50/60Hz 1.2A
Power Cord: Wall-outlet type or PC-outlet type

ENVIRONMENTAL

Operating conditions:
Temperature: 0 to 50 deg C
Humidity: 10% to 90% non-Condensing
Altitude: 12,000 feet

Storage conditions:

Temperature: -25 to 60 deg C
Humidity: 5% to 95% non-Condensing
Altitude: 40,000 feet

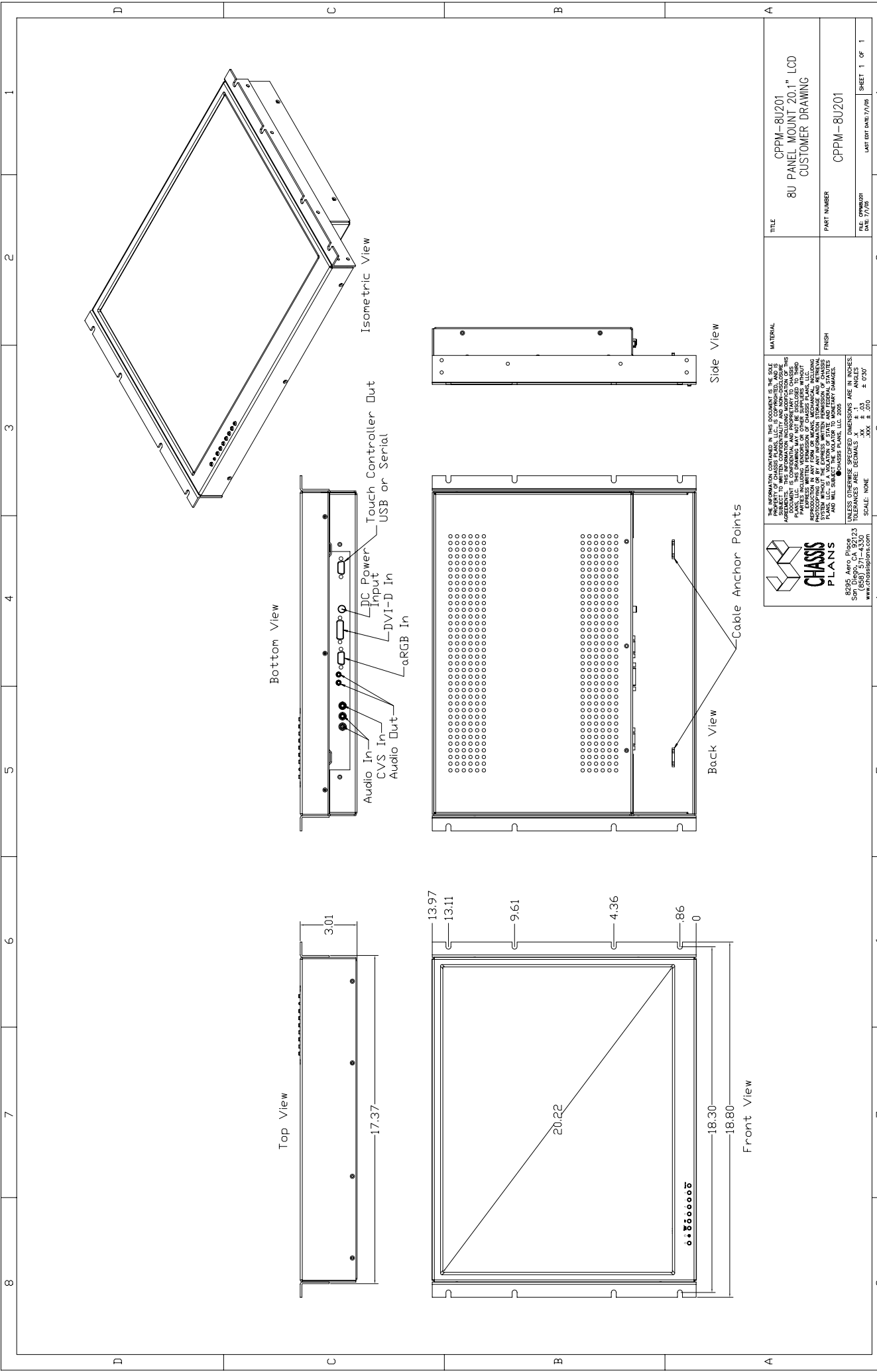
SHIPPING


Weight: 20lbs
Shipping Box - 24" x 7" x 21"

ORDERING GUIDE

Ordering Code	Description
CPPM-8U201-NV	No Touch Screen
CPPM-8U201-AV	Capacitive Touch Screen, Serial Output
CPPM-8U201-BV	Capacitive Touch Screen, USB Output
CPPM-8U201-CV	Resistive Touch Screen, Serial Output
CPPM-8U201-DV	Resistive Touch Screen, USB Output






CHASSIS PLANS
 8050 Ave. Plaza, Suite 223
 San Diego, CA 92123
 (619) 577-4330
www.chassisplans.com

THE INFORMATION CONTAINED IN THIS DOCUMENT IS THE SOLE PROPERTY OF CHASSIS PLANS, INC. AND IS UNCLASSIFIED AND NOT CONTROLLED. THIS DOCUMENT IS CONFIDENTIAL AND PROPRIETARY TO CHASSIS PLANS, INC. AND IS NOT TO BE REPRODUCED, COPIED, OR TRANSMITTED IN ANY FORM OR BY ANY MEANS, INCLUDING PHOTOCOPYING, RECORDING, OR BY ANY INFORMATION STORAGE AND RETRIEVAL SYSTEM, WITHOUT THE EXPRESS WRITTEN PERMISSION OF CHASSIS PLANS, INC. CHASSIS PLANS, INC. WILL NOT BE HELD RESPONSIBLE FOR ANY REPRODUCTION OR TRANSMISSION OF THIS DOCUMENT THAT VIOLATES THE ABOVE STATED POLICY.
 © CHASSIS PLANS, LLC 2008
 UNITS AND DIMENSIONS ARE: MILLIMETERS (mm) ANGLES (°) TOLERANCES ARE: DECIMALS (mm) .XX ± .03 .XXX ± .015
 SCALE: NONE

TITLE	CPPM-8U201 8U PANEL MOUNT 20.1" LCD CUSTOMER DRAWING
PART NUMBER	CPPM-8U201
DATE	07/20/09
LAST EDIT DATE	07/08/08
SHEET	1 OF 1