

CHASSIS PLANS



The CPPM-8U19 is a high performance rack mount 8U 19" TFT LCD display with 1280 x 1024 resolution. The display offers 250nit brightness, 350:1 contrast, and 85 degree viewing angle for exceptional viewability. An anti-glare hard coating minimizes reflections making images that much clearer. The aspect ratio is 4:3 with a Pixel Pitch of only 0.298x0.294mm. It will display 16.7 million colors (True Color).

With only 3" of depth, the CPPM-8U19 is perfect for rack, wall, panel, or kiosk installations. It can be used in Industrial, Commercial, Military, or Broadcast applications.

The CPPM-8U19 provides multiple signal input options including aRGB, DVI-D, S-Video and Composite video input.

As with all Chassis Plans products, a wide variety of custom options are available.

Designed and manufactured in the USA.

CPPM-8U19

ENCLOSURE

- 19" SXGA 1280 x 1024 TFT LCD
- *Designed to satisfy military, industrial and commercial requirements*
- *Compact enclosure for limited depth installation*
- *Rugged steel construction*

DISPLAY

- 19" Active Matrix TFT LCD
- *Features Samsung Technology*
- *SXGA 1280 x 1024 @ 60Hz Native Resolution*
- *12 Video modes*

VIDEO CONTROLLER

- *Standard aRGB, DVI, S-Video and Composite video inputs*
- *OSD (On Screen Display) for monitor setup and control*

POWER

- *+12VDC Operation with Included Universal AC Power Supply*
- *Low Power Consumption*

OPTIONAL FEATURES / OPTIONS

- *Touch Screens: resistive or capacitive*
- *Transflective LCD for daylight use*
- *Protective glare filters*
- *Customer specified paint color*
- *Customer logo*



The Original Industrial Computer Source®

Chassis Plans · 8295 Aero Place · San Diego · CA · 92123
 Phone (858) 571-4330 · Fax (858) 571-6146
 saleseng@chassisplans.com
 www.chassisplans.com
 © 2005 Chassis Plans

ENCLOSURE

19" (wide) x 8u (13.97") (high) x 3.0" (deep)
Weight: 19.0lbs
Rugged steel construction
Color: Powder coated black, light texture
(Custom colors and logos available)

DISPLAY

Samsung 19" TFT LCD w/ antiglare hard coating
Response Time (Tr/Tf): 15/10mS
Viewing Angle: 85/85/85/85 deg
Contrast Ratio: 350:1 typical
Brightness: 250cd/m2 typical
Pixel Pitch: 0.298mm x 0.294mm
Power Management: EPA Energy Star, VESA Compliant

DISPLAY RESOLUTION

Max Resolution:
SXGA 1280 x 1024 @ 60Hz
12 Display Modes SXGA
Horizontal Frequency: 15-80KHz Automatic
Vertical Frequency: 50-77Hz Automatic

CONNECTORS:

aRGB: 15-pin high density DB15
DVI: DVI-I 23-pin female
Composite: RCA Plug
S-Video In: 4-Pin Mini Din
Touch Screen: USB Type A or Serial DB9
Power: 2 Pin 2.0 x 5.5mm power

ON SCREEN DISPLAY

Contrast, Brightness, Autosetting, Clock / Phase, Horizontal & Vertical Position / Expansion / OSD, Text & Graph Mode Selection, Color Temp, Recall, Video Source

REGULATIONS

CE, FCC
Optional UL, CSA, CE/ENC, DHHS,
NORDICS, TUV/GS, 1S09241-3,
FCC-B, MPR II, TCO 95

POWER CONSUMPTION

Normal: 60W (front LED Green)
DPM Stand-by/Suspend: <5W (front LED Amber)
DPM Off: <3W (front LED Amber)
Power Switch Off: <1W (front LED Off)
Power Input: 100-240VAC, 50/60Hz 1.2A
Power Cord: DC-outlet type

ENVIRONMENTAL

Operating conditions:
Temperature: 0 to 50 deg C
Humidity: 20% to 90% non-condensing
Altitude: 10,000 feet

Storage conditions:

Temperature: -25 to 60 deg C
Humidity: 5% to 95% non-condensing
Altitude: 24,000 feet

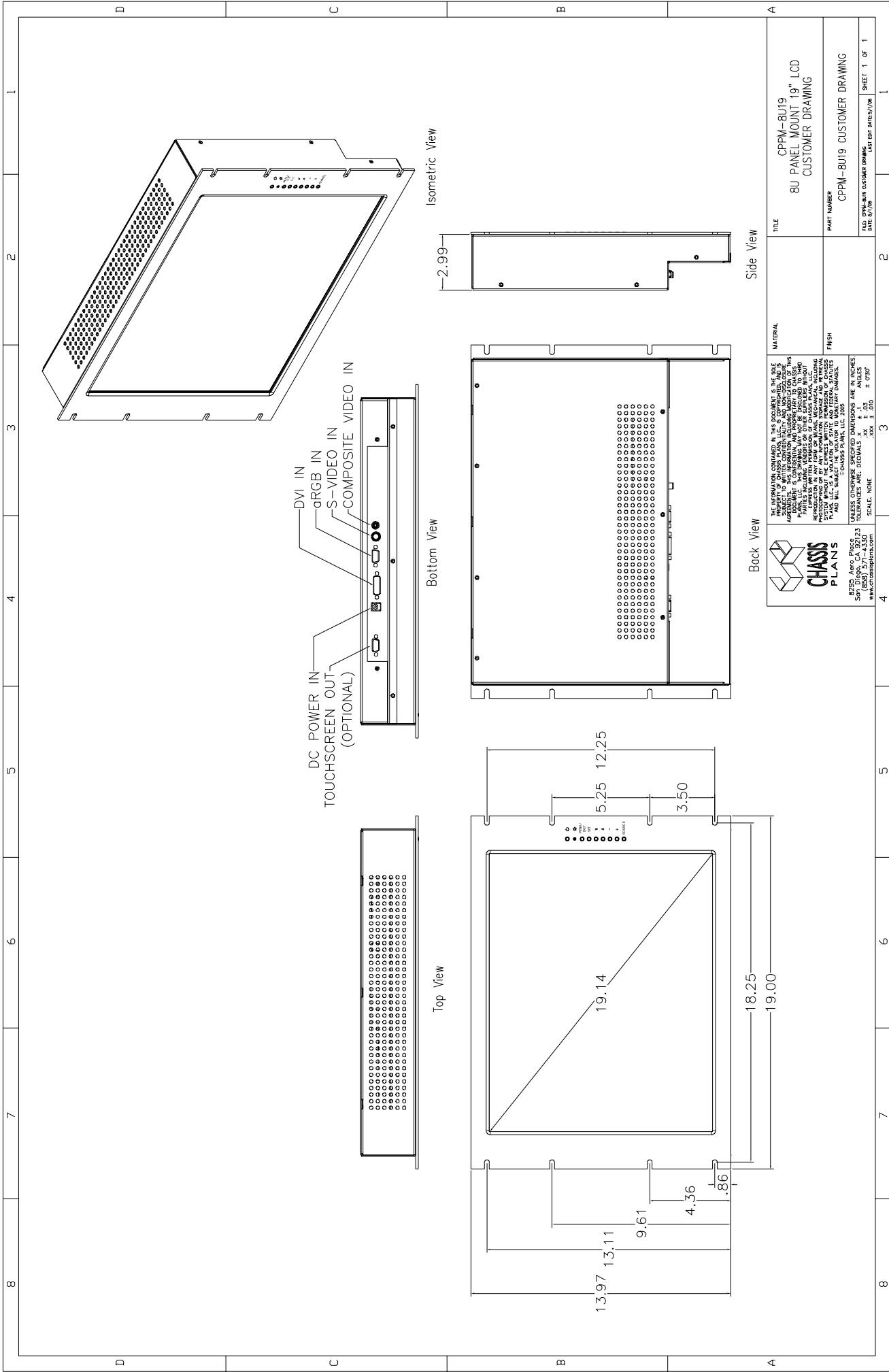
SHIPPING

Weight: 19lbs
Shipping Box - 24" x 7" x 21"

Ordering Code	Description
CPPM8U19-13V	No Touch Screen
CPPM8U19-1V	Capacitive Touch Screen, Serial Output
CPPM8U19-2V	Capacitive Touch Screen, USB Output
CPPM8U19-3V	Resistive Touch Screen, Serial Output
CPPM8U19-4V	Resistive Touch Screen, USB Output



The Original Industrial Computer Source®



Isometric View

Bottom View

Top View

Back View

Side View

		<p>THE INFORMATION CONTAINED IN THIS DRAWING IS THE PROPERTY OF CHASSIS PLANS, LLC. IT IS TO BE USED ONLY IN CONNECTION WITH THE AGREEMENT TO BUY OR LEASE A CHASSIS PLANS PRODUCT. NO PART OF THIS DRAWING IS TO BE REPRODUCED OR TRANSMITTED IN ANY FORM OR BY ANY MEANS, ELECTRONIC OR MECHANICAL, INCLUDING PHOTOCOPYING, RECORDING, OR BY ANY INFORMATION STORAGE AND RETRIEVAL SYSTEM, WITHOUT THE WRITTEN PERMISSION OF CHASSIS PLANS, LLC. THIS DRAWING IS THE PROPERTY OF CHASSIS PLANS, LLC. IT IS TO BE USED ONLY IN CONNECTION WITH THE AGREEMENT TO BUY OR LEASE A CHASSIS PLANS PRODUCT. UNLESS OTHERWISE SPECIFIED DIMENSIONS ARE IN INCHES. TOLERANCES ARE: DIMENSIONS .XX ±.002</p>	
<p>8U LCD Aero Plus 23 3000 (808) 571-4330 www.chassisplans.com</p>		<p>UNLESS OTHERWISE SPECIFIED DIMENSIONS ARE IN INCHES. TOLERANCES ARE: DIMENSIONS .XX ±.002</p>	
<p>TITLE CPPM-8U19 8U PANEL MOUNT 19" LCD CUSTOMER DRAWING</p>		<p>PART NUMBER CPPM-8U19 CUSTOMER DRAWING</p>	
<p>DATE 07/08</p>		<p>DATE 07/08</p>	
<p>FILE CPPM-8U19 CUSTOMER DRAWING</p>		<p>FILE CPPM-8U19 CUSTOMER DRAWING</p>	
<p>SHEET 1 OF 1</p>		<p>SHEET 1 OF 1</p>	