

# CHASSIS PLANS



The CPPM-8U17 is a high performance rack mount 8U 17" TFT LCD display with 1280 x 1024 resolution. The display offers 250nit brightness, 350:1 contrast, and 70 degree viewing angle for exceptional viewability. An anti-glare hard coating minimizes reflections making images that much clearer. The aspect ratio is 4:3 with a Pixel Pitch of only 0.264mm. It will display 16.7 million colors (True Color).

With only 3" of depth, the CPPM-8U17 is perfect for rack, wall, panel, or kiosk installations. It can be used in Industrial, Commercial, Military, or Broadcast applications.

The CPPM-8U17 has a standard aRGB signal input plus optional DVI-D, S-Video, and CVS.

As with all Chassis Plans products, a wide variety of custom options are available.

***Designed and manufactured in the USA.***



The Original Industrial Computer Source®

## ***CPPM-8U17***

### **ENCLOSURE**

- 19" x 8U (13.97") x 3" deep
- *Designed to satisfy military, industrial and commercial requirements*
- *Compact enclosure for limited depth installation*
- *Rugged steel construction*

### **DISPLAY**

- 17" Active Matrix TFT LCD
- *Features Samsung Technology*
- *SXGA 1280 x 1024 @ 60Hz Native Resolution*
- *12 Video modes*
- *Fast response time for real-time video*

### **VIDEO CONTROLLER**

- *Standard analog RGB input*
- *Optional DVI, S-Video, and Composite video input*
- *OSD (On Screen Display) for monitor setup and control*

### **POWER**

- *+12VDC Operation with included universal AC power supply*
- *Low power consumption*

### **OPTIONAL FEATURES / OPTIONS**

- *Touch Screens: resistive or capacitive*
- *Transflective LCD for daylight use*
- *Protective glare filters*
- *Customer specified paint color*
- *Customer logo*

## ENCLOSURE

19" (wide) x 8U (13.97") (high) x 3.0" (deep)  
 Weight: 19.0lbs  
 Rugged steel construction  
 Color: Powder coated black, light texture  
 (Custom colors and logos available)

## DISPLAY

Samsung 17" TFT LCD w/ antiglare hard coating  
 Display Colors: 16.7 Million  
 Response Time (Tr/Tf): 5/20mS  
 Viewing Angle: 75/70/60/60 deg  
 Contrast Ratio: 350:1 typical  
 Brightness: 250cd/m2 typical  
 Pixel Pitch: 0.264mm x 0.264mm  
 Power Management: EPA Energy Star, VESA  
 Compliant

## DISPLAY RESOLUTION

Max Resolution: SXGA 1280 x 1024 @ 60Hz  
 12 Display Modes SXGA  
 Horizontal Frequency: 15-80KHz Automatic  
 Vertical Frequency: 50-77Hz Automatic

## CONNECTORS:

Standard  
 aRGB: 15-pin high density DB15  
 Power: 2 Pin 2.0 x 5.5mm power  
 Optional  
 DVI: DVI-I 23-pin female  
 Composite: RCA Plug  
 S-Video In: 4-Pin Mini Din  
 Touch Screen: USB Type A or Serial DB9

## ON SCREEN DISPLAY

Contrast, Brightness, Autosetting, Clock / Phase,  
 Horizontal & Vertical Position / Expansion / OSD,  
 Text & Graph Mode Selection, Color Temp, Re-  
 call, Video Source

## REGULATIONS

CE, FCC  
 Optional UL, CSA, CE/ENC, DHHS,  
 NORDICS, TUV/GS, 1S09241-3,  
 FCC-B, MPR II, TCO 95

## POWER CONSUMPTION

Normal: 60W (front LED Green)  
 DPM Stand-by/Suspend: <5W (front LED Amber)  
 DPM Off: <3W (front LED Amber)  
 Power Switch Off: <1W (front LED off)  
 Power Supply: Remote "brick" switching supply  
 Power Supply Size: 4.8" x 2.4" x 1.5", 12oz  
 Power Input: 100-240VAC, 50/60Hz 1.8A  
 Optional -48VDC input available

## ENVIRONMENTAL

Operating conditions:  
 Temperature: 0 to 50 deg C  
 Humidity: 20% to 90% non-condensing  
 Altitude: 10,000 feet  
 Storage conditions:  
 Temperature: -25 to 60 deg C  
 Humidity: 5% to 95% non-condensing  
 Altitude: 24,000 feet

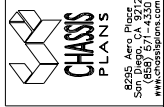
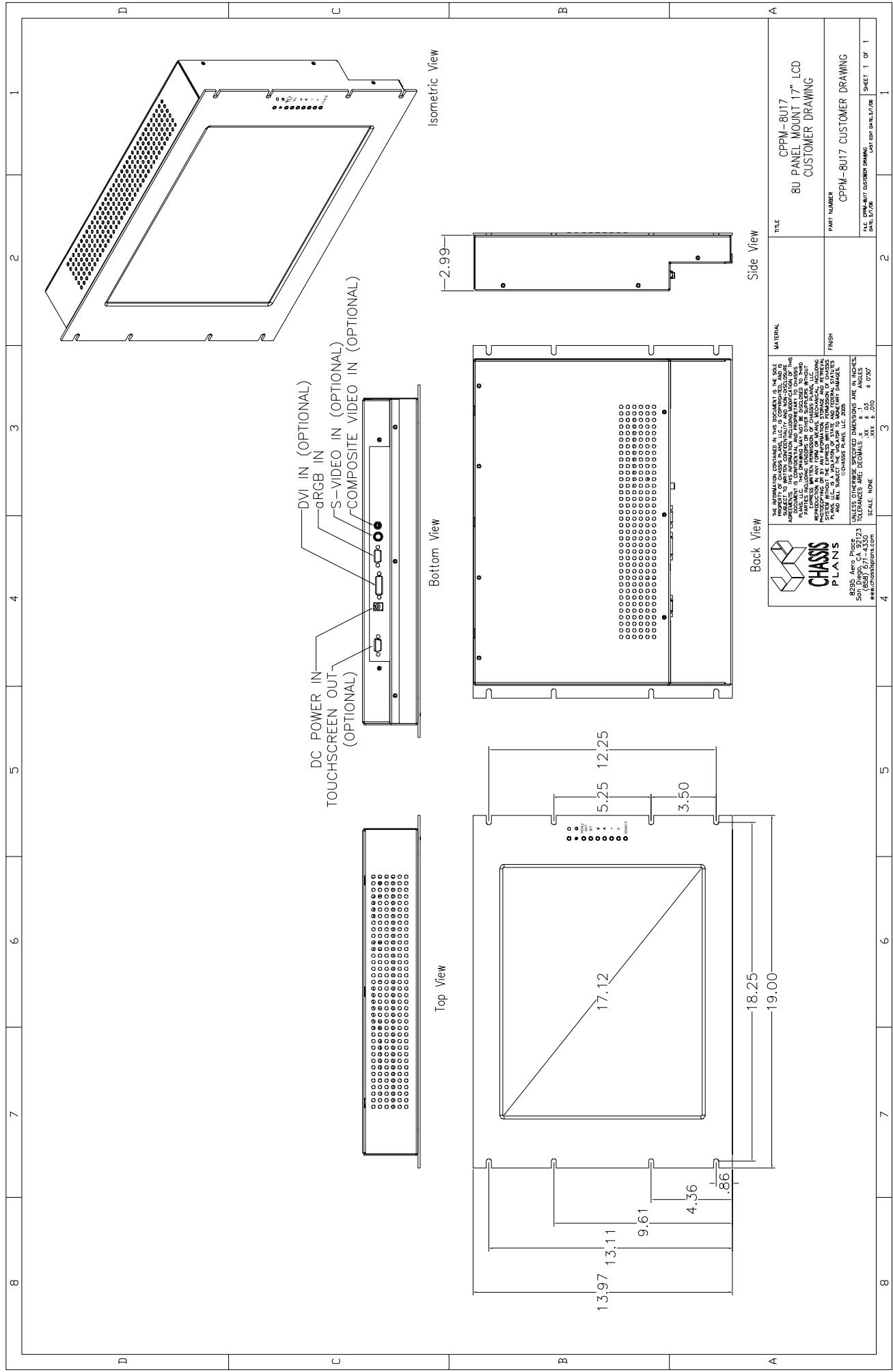
## SHIPPING

Weight: 19lbs  
 Shipping Box - 24" x 7" x 21"

Ordering Code	Description
<b>Video Input: Analog RGB Input Only</b>	
CPPM8U17-13A	No Touch Screen
CPPM8U17-1A	Capacitive Touch Screen, Serial Output
CPPM8U17-2A	Capacitive Touch Screen, USB Output
CPPM8U17-3A	Resistive Touch Screen, Serial Output
CPPM8U17-4A	Resistive Touch Screen, USB Output
<b>Video Input: Analog RGB, DVI-D, S-Video, Composite Video</b>	
CPPM8U17-13V	No Touch Screen
CPPM8U17-1V	Capacitive Touch Screen, Serial Output
CPPM8U17-2V	Capacitive Touch Screen, USB Output
CPPM8U17-3V	Resistive Touch Screen, Serial Output
CPPM8U17-4V	Resistive Touch Screen, USB Output



The Original Industrial Computer Source®



8925 - Auto Plan  
 5011 - Draft, CA 92173  
 (656) 571-4330  
 www.chassisplans.com

**Back View**

THE INFORMATION CONTAINED IN THIS DOCUMENT IS THE SOLE PROPERTY OF CHASSIS PLANS, LLC. IT IS CONFIDENTIAL AND NOT TO BE REPRODUCED OR TRANSMITTED IN ANY FORM OR BY ANY MEANS, ELECTRONIC OR MECHANICAL, INCLUDING PHOTOCOPYING, RECORDING, OR BY ANY INFORMATION STORAGE AND RETRIEVAL SYSTEM. THIS DRAWING MAY NOT BE REPRODUCED OR TRANSMITTED IN ANY FORM OR BY ANY MEANS, ELECTRONIC OR MECHANICAL, INCLUDING PHOTOCOPYING, RECORDING, OR BY ANY INFORMATION STORAGE AND RETRIEVAL SYSTEM WITHOUT THE EXPRESS WRITTEN PERMISSION OF CHASSIS PLANS, LLC. CHASSIS PLANS, LLC IS NOT RESPONSIBLE FOR ANY DAMAGES, INCLUDING CONSEQUENTIAL DAMAGES, ARISING FROM THE USE OF THIS DRAWING. CHASSIS PLANS, LLC AND ALL SKETCHES ARE THE PROPERTY OF CHASSIS PLANS, LLC. © CHASSIS PLANS, LLC 2008

**Dimensions are in inches**  
 TOLERANCES ARE:  
 .XX ± .01 ANGLES  
 .XX ± .120 # 1/32"

SCALE: NONE

**Side View**

MATERIAL: \_\_\_\_\_  
 FINISH: \_\_\_\_\_

TITLE	CPPM-8U17 8U PANEL MOUNT 17" LCD CUSTOMER DRAWING
PART NUMBER	CPPM-8U17 CUSTOMER DRAWING
DATE	08/16/08
DRAWN BY	_____
CHECKED BY	_____
DATE	08/16/08
SHEET	1 OF 1