

C5CHASSIS

ROBUST 4U ENCLOSURE

RUGGED ENTERPRISE CLASS

SYSTEMS ENGINEERED TO PERFORM™



The C5 Series chassis represent the next generation providing high performance in a low cost 4U rack mount enclosure. Feature rich, the C5 Series is a solid, robust design which will meet the most rigorous and demanding requirements.

FEATURES

- Compact 4U x 20-inch (508mm) design
- Locking front door provides drive security
- 460-1000 Watt ATX or redundant power supply
- Three 5.25-inch and one 3.5-inch external drives
- Hold-down bar to secure installed feature cards
- Removable rack ears for bench top applications
- Two 90CFM 4.7" internal fans
- Front panel air filter
- Front panel USB connectors (behind drive door)

SUPPORT

- Superior pre- and post-sales technical support
- All products carry a two year limited warranty

CUSTOMIZATION

- Custom paint and logo available
- Custom chassis features to fit customer requirements
- Several fan options
- Turnkey Configured Systems to Customer Spec



The Original Industrial Computer Source®

Chassis Plans · 8295 Aero Place · San Diego · CA · 92123
Phone (858) 571-4330 · Fax (858) 571-6146
saleseng@chassisplans.com
www.chassisplans.com
© 2007 Chassis Plans

C5CHASSIS

The enclosure is constructed of 18 gauge steel, clear zinc plated for corrosion protection and an attractive appearance. The front panel is attractively detailed and is of heavier gauge than the chassis.

There is a more than ample drive storage with the provided three front accessible 5-1/4 inch and one front accessible 3-1/2 inch drive bays.

A lockable door with a Plexiglas insert covers and protects the drives. Accessible behind the door is the power and reset switches as well as the power-on and drive activity LED's. The LED's are visible through the door when it is closed. Two USB connectors are mounted behind the door.

The left side of the chassis provides a large air filter behind a door for easy filter cleaning. Cooling is provided by two easily accessible 90CFM 4.7" fans. Other fan options are available. The cooling is optimized for high-power dual and quad-core processors for reliable operation.

The C5 Chassis provides for mounting an ATX (9.6x12") motherboard. The C5000 Chassis accepts a 14-slot passive back-plane. An innovative card hold-down mechanism assures cards stay seated in high-G environments such as shipping.

Chassis Plans offers turn-key configured systems exactly built to customer specification and requirements.

Dimensions (W x H x D)

17 x 6.95 x 20.1-inch (432 x 176.5 x 508mm)

Front Door

Locking front door w/ clear window

Front Panel Indicators

Power LED

Disk activity LED

Front Panel Controls/Connections

System reset switch

Power on/off switch

Two USB connectors

Drive Capacity

Three 5.25-inch front drive bays

One 3.5-inch front drive bay

Cooling Fans

Two 90CFM 4.7" fans

Air filter—1/4" Thick 30PPI

Construction

18 gauge cold rolled steel

Clear zinc plated

Hold-down bar

Color

Black

Medium texture

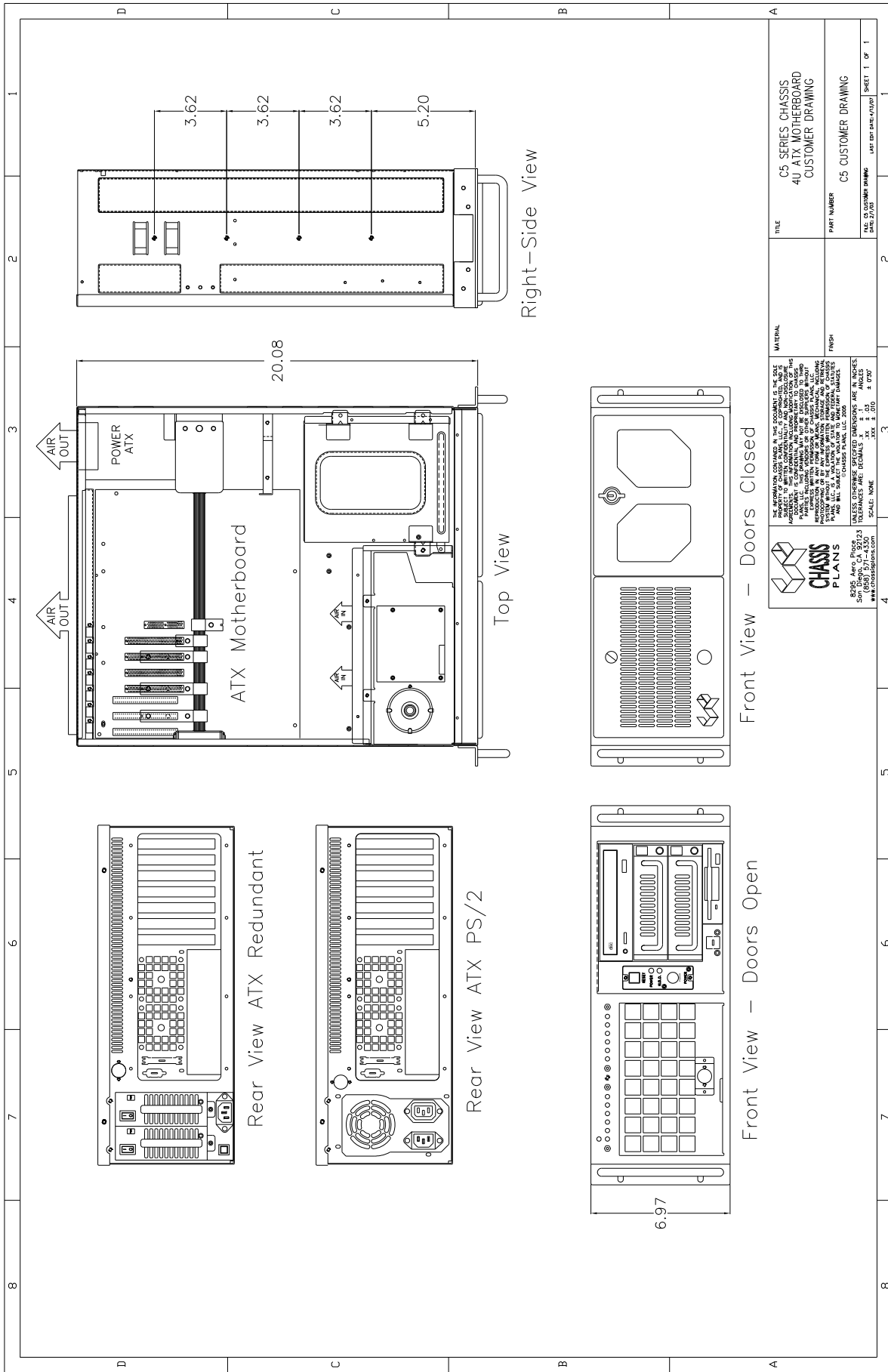
Weight

30lbs. (13.6kg) representative system

Environment

Operating and storage temperature, shock and humidity is dependant on installed components





<p>THE INFORMATION CONTAINED IN THIS DOCUMENT IS THE SOLE PROPERTY OF CHASSIS PLANS, INC. AND IS UNCLASSIFIED EXCEPT WHERE SHOWN OTHERWISE. IT IS THE PROPERTY OF CHASSIS PLANS, INC. AND IS UNCLASSIFIED EXCEPT WHERE SHOWN OTHERWISE. IT IS THE PROPERTY OF CHASSIS PLANS, INC. AND IS UNCLASSIFIED EXCEPT WHERE SHOWN OTHERWISE. IT IS THE PROPERTY OF CHASSIS PLANS, INC. AND IS UNCLASSIFIED EXCEPT WHERE SHOWN OTHERWISE.</p>		<p>TITLE C5 SERIES CHASSIS 4U ATX MOTHERBOARD CUSTOMER DRAWING</p>
<p>MATERIAL</p>	<p>FINISH</p>	<p>PART NUMBER C5 CUSTOMER DRAWING</p>
<p>DATE: 05/27/08 LAST REV DATE: 04/29/08</p>		<p>SHEET: 1 OF 1</p>

